



Enterprise storage that enables competitive advantage at multi-petabyte scale

The InfiniBox® enterprise storage array delivers faster-than-all-flash performance, 100% availability, and multi-petabyte scale for mixed application workloads. Zero-impact snapshots and active/active replication dramatically improve business agility, while FIPS-validated data-at-rest encryption eliminates the need to securely erase decommissioned arrays. With InfiniBox, enterprise IT organizations and cloud service providers can exceed their service level objectives while lowering the cost and complexity of their petabyte-scale storage operations.



HIGH PERFORMANCE

A truly innovative and effective cache management algorithm (Neural Cache), combined with an ultra-efficient data layout, delivers high throughput, at microsecond latency. NVMe-oF and storage class memory (SCM) readiness preserves InfiniBox's competitive advantages as customers' infrastructures continue to evolve.

MULTI-PETABYTE SCALE

Maximum system capacity utilization is possible due to extremely efficient thin provisioning, continuous space reclamation, and inline data compression. Consolidating multiple systems is easy to accomplish and remarkably cost-effective, especially with a single 42U rack that scales up to 10PB of effective capacity.

100% AVAILABILITY AND RELIABILITY

InfiniBox's self-healing architecture, leveraging our patented InfiniRaid data layout and predictive failure analysis, delivers the industry's highest availability and non-disruptive upgrades. The InfiniBox hardware triple redundancy design enables rapid recovery from any component failure. InfiniBox is backed by Infinidat's 100% Data Availability Guarantee¹. FIPS-validated data-at-rest encryption and SnapSecure®, Infinidat's immutable snapshot technology reduce or eliminate Cybersecurity concerns.

BUSINESS AGILITY AND CONTINUITY

Space-efficient, zero-impact snapshots simplify data protection as well as accelerating agile development and quality assurance with nearly infinite copies of your data. Integrated synchronous, asynchronous, active/active, and concurrent multi-site replication provide the highest levels of data availability for business continuity and disaster recovery.

SIMPLE AND POWERFUL MANAGEMENT FOR MULTI-TENANT ENVIRONMENTS

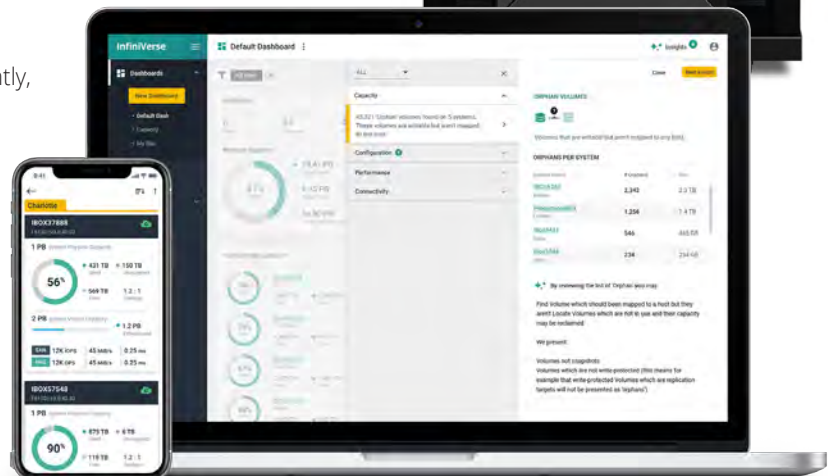
InfiniVerse, our cloud-based analytics tool, monitors, reports, and provides insights into your Infinidat estate, and predicts the impact of infrastructure changes to performance. Element management is done via the InfiniBox GUI, an intuitive HTML5 GUI, that simplifies the most complex storage management operations. A comprehensive RESTful API and a powerful CLI help automate complex tasks. Quality of Service capabilities facilitate service level coordination across tenants, workloads, and volumes.

UNIFIED STORAGE

InfiniBox provides FC, iSCSI, NFSv3 and SMB protocols concurrently, in a single platform, making it easier to consolidate workloads. Eliminate multiple arrays with their related licensing and service contracts by consolidating to InfiniBox.

CONNECTIVITY AND INTEGRATION

InfiniBox integrates with critical business applications in your data center using native interfaces. Host PowerTools, our intuitive host connectivity and storage provisioning tool, reduces management tasks from days or hours to seconds!



¹ Some restrictions may apply - refer to the Infinidat 100% Availability Guarantee Terms and Conditions

InfiniBox Specifications

	F6300	F4300	F2300
Capacity			
Usable Capacity	1.0PB to 4.0PB	512TB to 2.0PB	150TB to 499TB
Effective Capacity*	2.5PB to 10.0PB	1.3PB to 5.0PB	375TB to 1.2PB
Performance Features			
Memory	Up to 3.072TB	Up to 2.304TB	Up to 1.152TB
Flash Cache	Up to 92TB, 368TB Optional	Up to 92TB, 368TB Optional	Up to 92TB, 368TB Optional
IOPS	2.0M IOPS**	1.4M IOPS**	980K IOPS**
Throughput	25 GB/s	20 GB/s	14 GB/s
Connectivity and Integration			
FC Ports	24x 16Gbps, 32Gbps Optional, NVMe-oF Ready		
Ethernet Ports	12x 25GbE/10GbE + 6x 10GbE, NVMe-oF Ready		
Ecosystem Integration	VMware, OpenStack, CommVault, Rubrik, Veeam, Veritas, Microsoft, SAP, Host PowerTools, UNIX, Windows		
Availability and Protection			
Fully Redundant Hardware	N+2 Redundant System Components, Resilient Against Multiple Concurrent Failures Triple-Active Redundant Nodes		
Data Protection	FIPS 140-2 Validated In-Line and At-Rest Data Integrity Verification, Data-at-Rest Encryption, Fastest Media Rebuild in the Industry Petabyte-Scale Snapshots with Zero Performance Impact; Readable/Writable and Immutable Snapshots Active/Active Replication, Synchronous Replication, and Asynchronous Replication		
Scalability			
Max. Volume/File System Size	Unlimited		
Max. Files per Directory/File System	>17B		
Max. Number of Volumes	Unlimited		
Max. Number of Snapshots	100,000		
Max. Number of File Systems	4,000		
Max. File Size	1PB		
Support and Service	Three Years, 24x7 Support with Assigned Technical Advisor at No Additional Cost		
Pricing and Licensing			
System Feature Licensing	All features are included at No Additional Cost		

* Effective Capacity includes the benefits of inline compression and space-efficient snapshots

** For NFSv3; IOPs for FC/iSCSI are 1.4M, 1.0M, and 700K, respectively

InfiniBox Physical and Environmental Characteristics

	F6300	F4300	F2300
Power Consumption (typical)	8 kW	5.5 kW	3.6 kW
Form Factor	Standard 48.26 cm (19 in) 42U Rack	26U in a Standard 48.26 cm (19 in) 42U Rack	18U in a Standard 48.26 cm (19 in) 42U Rack
Maximum Weight	1,176 kg (2,593 lb)	795 kg (1,753 lb)	583 kg (1,286 lb)
Operating Temperature	10°C–30°C (50°F–85°F)		
Altitude (max)	3,000 m (9,800 ft)		
Humidity	25%–80% non-condensing		
Service Clearance Front/Rear	120 cm/45 cm (47.24 in/17.8 in)		
Input Voltage	North America: International:	Single-phase: 208 VAC Three-phase: 120Y/208 VAC, 50/60 HZ Single-phase: 200-240 VAC Three-phase: 220/380-240/415 VAC, 50/60 HZ	
Input Current	North America: International:	Single-phase: 4 inputs, 24A each Three-phase: 4 inputs, 3*24A each Single-phase: 4 inputs, 32A each Three-phase: 2 inputs, 3*24A each	Single-phase: 2 inputs, 24A each Three-phase: 2 inputs, 3*24A each Single-phase: 4 inputs, 32A each Three-phase: 2 inputs, 3*16A each
Input Power Frequency	50/60 HZ		
Cooling	27,300 BTU/Hour	19,110 BTU/Hour	12,300 BTU/Hour
Certification Standards	EMC: EN 55032 - (CISPR 32), EN 55024 or EN 55035, (CISPR 24/32), EN 61000-3-2, EN 61000-3-3, FCC Part 15, ICES-003		
SAFETY:	IEC/EN/UL 62368-1, IEC 60950-1:2005	ROHS:	EN 50581 - 2012
REACH:	Regulation No. 1907/2006 (Article 33)	Batteries Directive:	2006/66/EC

InfiniBox Specifications

	F6200	F4200	F2200
Capacity			
Usable Capacity	1.0PB to 4.0PB	512TB to 2.0PB	249TB to 499TB
Effective Capacity*	2.5PB to 10.0PB	1.3PB to 5.0PB	622TB to 1.2PB
Performance Features			
Memory	Up to 3.072TB	Up to 2.304TB	Up to 768GB
Flash Cache	Up to 207TB	Up to 207TB	Up to 103TB
IOPS	1.3M IOPS	975K IOPS	650K IOPS
Throughput	15 GB/Sec	12 GB/Sec	8 GB/Sec
Connectivity and Integration			
FC Ports	24x 8Gbps or 24x 16Gbps Optional		
Ethernet Ports	12x 10GbE		
Ecosystem Integration	VMware, OpenStack, CommVault, Rubrik, Veeam, Veritas, Microsoft, SAP, Host Power Tools, UNIX, Windows		
Availability and Protection			
Fully Redundant Hardware	N+2 Redundant System Components, Resilient Against Multiple Concurrent Failures Triple-Active Redundant Nodes		
Data Protection	In-Line and At-Rest Data Integrity Verification, Data-at-Rest Encryption, Fastest Media Rebuild in the Industry Petabyte-Scale Snapshots with Zero Performance Impact; Readable/Writable and Immutable Snapshots Active/Active Replication, Synchronous Replication, and Asynchronous Replication		
Scalability			
Max. Volume/File System Size	Unlimited		
Max. Files per Directory/File System	>17B		
Max. Number of Volumes	Unlimited		
Max. Number of Snapshots	100,000		
Max. Number of File Systems	4,000		
Max. File Size	>1PB		
Support and Service	Three Years, 24x7 Support with Assigned Technical Advisor at No Additional Cost		
Pricing and Licensing			
System Feature Licensing	All Features are Included at No Additional Cost		

*Effective Capacity includes the benefits of thin provisioning, inline compression, and space-efficient snapshots

InfiniBox Physical and Environmental Characteristics

	F6200	F4200	F2200
Power Consumption	8 kW	5.5 kW	3.5 kW
Form Factor	Standard 48.26 cm (19 in) 42U Rack	26U in a Standard 48.26 cm (19 in) 42U Rack	18U in a Standard 48.26 cm (19 in) 42U Rack
Maximum Weight,	1,207 kg (2,661 lb)	835 kg (1,841 lb)	593 kg (1,308 lb)
Operating Temperature	10°C–30°C (50°F–85°F)		
Altitude (max)	3,050 m (10,000 ft)		
Humidity	25%–80% non-condensing		
Service Clearance Front/Rear	120 cm/45 cm (47.24 in/17.8 in)		
Input Voltage	North America:	Single-phase: 208V Three-phase: 208V between phases	
	International:	Single-phase: 220V Three-phase: 380V between phases	
Input Current	North America:	Single-phase: 4 inputs, 30A each Three-phase: 2 inputs, 3*30A each	
	International:	Single-phase: 4 inputs, 32A each Three-phase: 2 inputs, 3*16A each	
Input Power Frequency	50/60 HZ		
Cooling	27,500 BTU/Hour	18,800 BTU/Hour	12,000 BTU/Hour
Certification Standards	EMC: EN 55032 - (CISPR 32), EN 55024 or EN 55035, (CISPR 24/32), EN 61000-3-2, EN 61000-3-3, FCC Part 15, ICES-003		
	SAFETY:	IEC/EN/UL 62368-1, IEC 60950-1:2005	ROHS: EN 50581 - 2012
	REACH:	Regulation No. 1907/2006 (Article 33)	Batteries Directive: 2006/66/EC