

Enterprise storage that delivers consistent ultra-high performance and sub-millisecond latency for the most intense workloads

InfiniBox SSA™ consistently delivers outstanding performance for the most extreme workloads — those that require ultra-low latency for every I/O. Using 100% solid-state technology for persistent storage coupled with the power of Infinidat's Neural Cache deep learning algorithms, InfiniBox SSA takes the groundbreaking performance of InfiniBox to the next level. InfiniBox SSA delivers the same proven reliability, availability, ease of use and customer experience that enterprise IT organizations and cloud service providers have come to expect from the Infinidat family of enterprise storage solutions, in a system especially designed for ultra-performance sensitive applications.



The InfiniBox SSA™ enterprise storage system is designed to meet the specialized needs of specific applications with workloads that require consistent sub-millisecond latency for every IO read from the storage subsystem. Leveraging an SSD back-end, this solution provides the intelligence of the Infinidat Neural Cache, providing much of the IO from DRAM, coupled with the features and functions of the market-leading InfiniBox, including 100% availability guaranteed.

HIGH PERFORMANCE

Truly innovative and effective cache management algorithms (Neural Cache), combined with an ultra-efficient data layout, delivers high throughput with sub-millisecond latency.

EFFICIENT UTILIZATION

Maximum system capacity utilization is possible due to extremely efficient thin provisioning, continuous space reclamation, and inline data compression.

HIGH AVAILABILITY AND RELIABILITY

InfiniBox SSA's self-healing architecture, leveraging our patented InfiniRaid® data layout and predictive failure analysis, delivers the industry's highest availability and non-disruptive upgrades. The InfiniBox SSA hardware redundancy design (n+2) enables rapid recovery from any component failure.

BUSINESS AGILITY AND CONTINUITY

Space-efficient, zero-impact snapshots simplify data protection as well as accelerating agile development and quality assurance with nearly infinite copies of your data. Integrated synchronous, asynchronous, active/active, and multi-site replication provide the highest levels of data availability for business continuity and disaster recovery.

SIMPLE AND POWERFUL MANAGEMENT FOR MULTI-TENANT ENVIRONMENTS

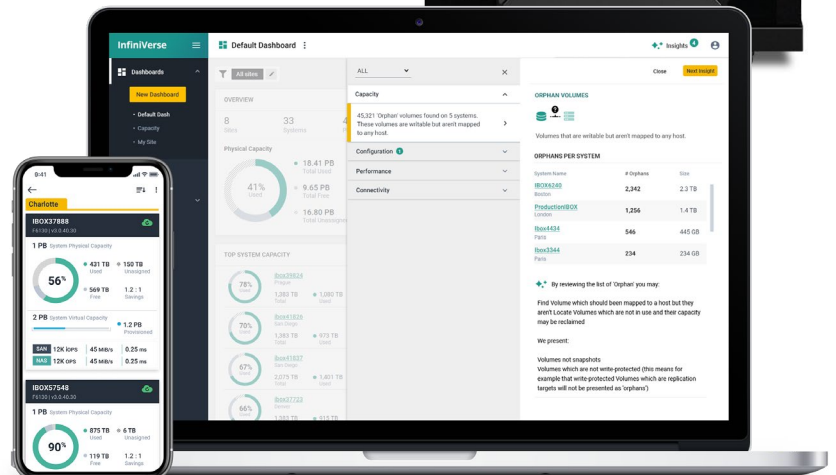
InfiniVerse®, our cloud-based analytics tool, monitors, reports, provides insights into your Infinidat estate, and predicts the impact of infrastructure changes to performance. Element management is done via the InfiniBox intuitive HTML5 GUI, that simplifies the most complex storage management operations. A comprehensive RESTful API and a powerful CLI help automate complex tasks. Quality-of-Service capabilities facilitate service level coordination across tenants, workloads, and volumes.

UNIFIED STORAGE

InfiniBox SSA provides FC and iSCSI protocols concurrently, in a single platform, making it easier to consolidate workloads.

CONNECTIVITY AND INTEGRATION

InfiniBox SSA integrates with critical business applications in your data center using native interfaces. Host PowerTools, our intuitive host connectivity and storage provisioning tool, reduces management tasks from days or hours to seconds!



InfiniBox SSA Specifications

F4304S

Capacity

Usable Capacity	546TB
Effective Capacity*	1092TB

Performance Features

Memory	2,304GB
IOPS	1.5M IOPS
Throughput	25 GiB/s

Connectivity and Integration

FC Ports	24x 32Gbps, NVMe-oF Ready
Ethernet Ports	12x 10GbE/25GbE Optional + 6x 10GbE, NVMe-oF Ready
Ecosystem Integration	VMware, OpenStack, CommVault, Veeam, Veritas, Kubernetes, Microsoft, SAP, Host PowerTools for Linux, UNIX, Windows

Availability and Protection

Fully Redundant Hardware	N+2 Redundant System Components, Resilient Against Multiple Concurrent Failures Triple-Active Redundant Controller Nodes
Data Protection	Data-at-Rest Encryption In-Line and At-Rest Data Integrity Verification, Fastest Media Rebuild in the Industry Petabyte-scale snapshots with no performance impact; Read/Writable and Immutable snapshots Replication to or from any InfiniBox or InfiniBox SSA model

Scalability

Max. Volume Size	Unlimited
Max. Number of Volumes	Unlimited
Max. Number of Snapshots	100,000

Support and Service

Three Years, 24x7 Support with Assigned Technical Advisor at no additional cost

Pricing and Licensing

System Feature Licensing	All features are included at no additional cost
--------------------------	---

*Effective Capacity includes the benefits of inline compression and space-efficient snapshots

InfiniBox SSA Physical and Environmental Characteristics

F4304S

Power Consumption (typical)	4.8 KW
Form Factor	26U in a standard 48.26 cm (19 in) 42U Rack
Maximum Weight	710 kg (1,565 lb)
Operating Temperature	10°C–30°C (50°F–85°F)
Altitude (max)	3,000 m (9,800 ft)
Humidity	25%–80% non-condensing
Service Clearance Front/Rear	120 cm/60 cm (47.24 in/23.63 in)
Input Voltage	North America: Single-phase: 200-240 VAC, 50/60 HZ Three-phase: 120Y/208 VAC 3W+N+PE 50/60 HZ International: Single-phase: 200-240 VAC, 50/60 HZ Three-phase: 220/380-240/415 VAC 3W+N+PE 50/60 HZ
Input Current	North America: Single-phase: 4 inputs, 24A each Three-phase: 2 inputs, 3x 24A each phase International: Single-phase: 4 inputs, 32A each Three-phase: 2 inputs, 3x 16A each phase
Input Power Frequency	50/60 HZ
Cooling	16,380 BTU/Hour
Certification Standards	EMC: EN 55032 - (CISPR 32), EN 55024 or EN 55035, (CISPR 24/32), EN 61000-3-2, EN 61000-3-3, FCC Part 15, ICES-003 SAFETY: IEC/EN/UL 62368-1, IEC 60950-1:2005 ROHS: EN 50581 - 2012 REACH: Regulation No. 1907/2006 (Article 33) Batteries Directive: 2006/66/EC